

**POSS: PKU Omn-directional Smart Sensing**

**URL: [www.poss.pku.edu.cn](http://www.poss.pku.edu.cn)**

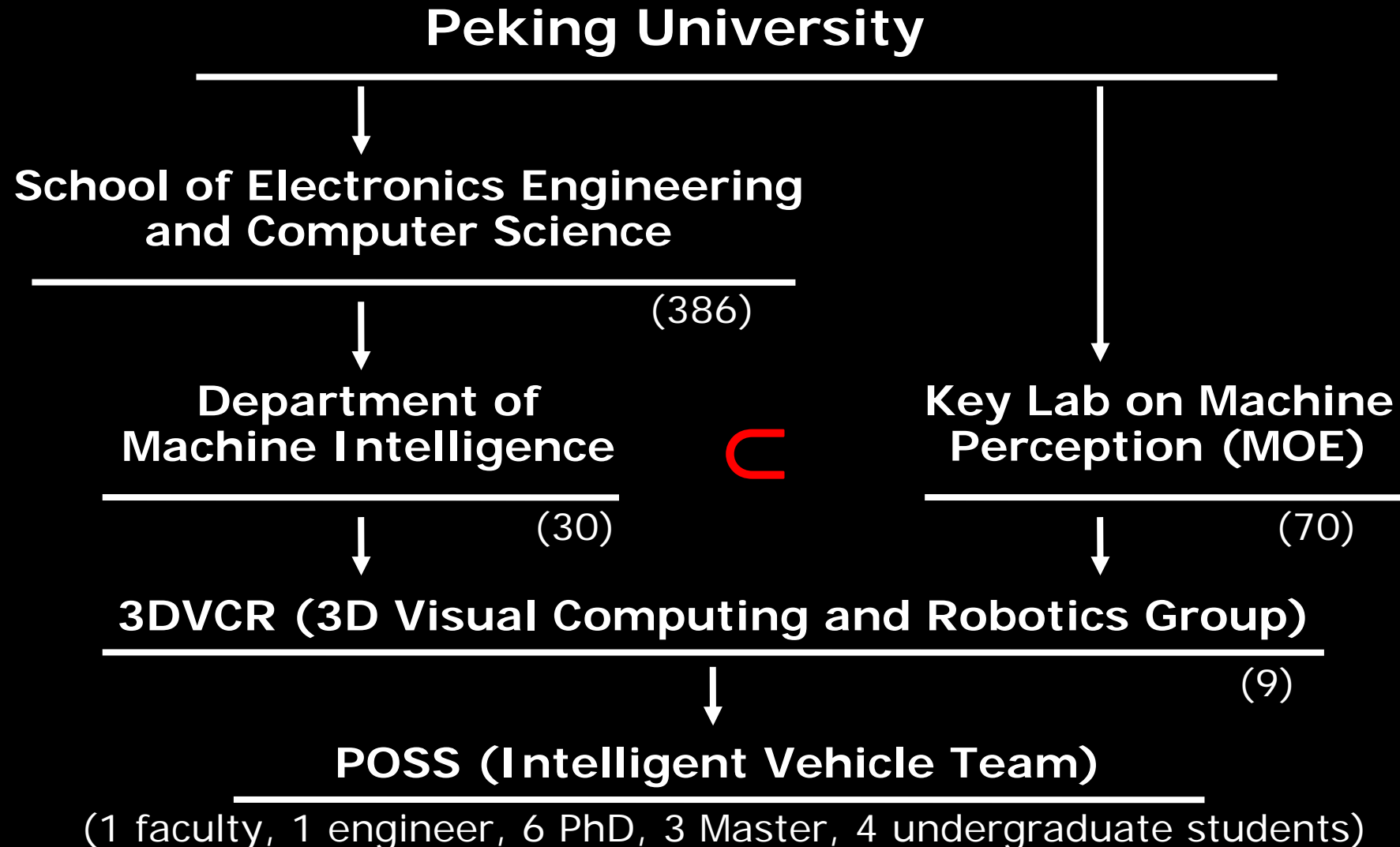
## **Towards Omni-directional Sensing and Reasoning in Real World Environment**

**Huijing Zhao, [zhaohj@cis.pku.edu.cn](mailto:zhaohj@cis.pku.edu.cn)**

**Key Lab on Machine Perception (MOE)  
School of Electronics Engineering and Computer Science**

**Peking University**

# Where is POSS Team?

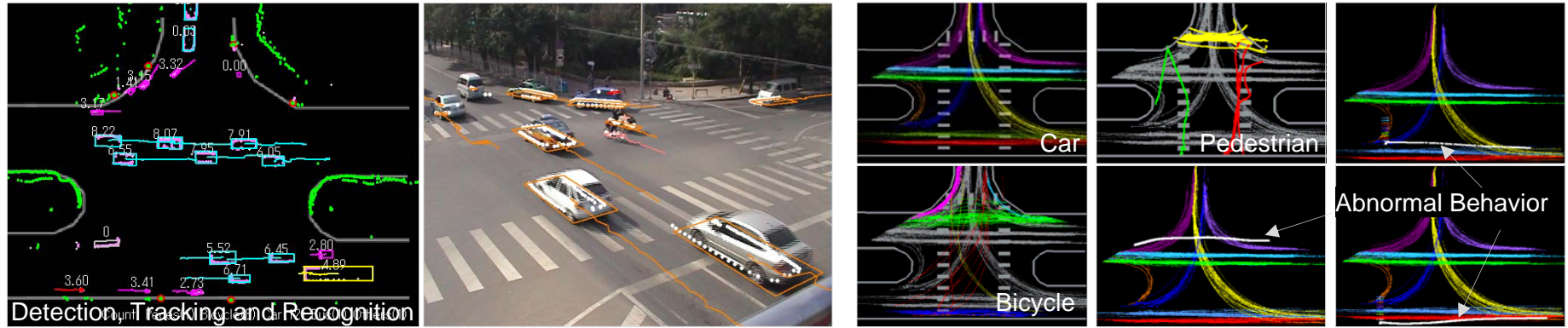


# POSS Team

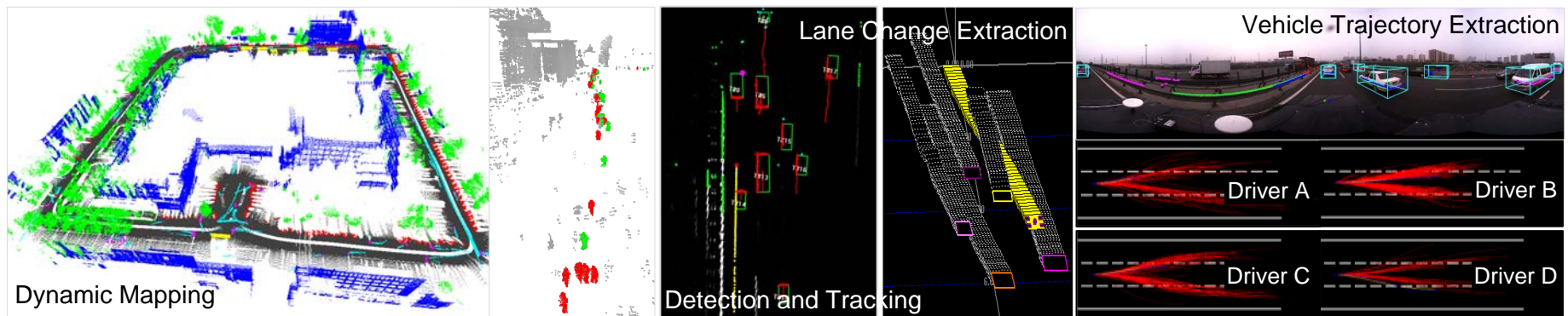




## Monitoring a traffic scene through network sensing



## Monitoring a dynamic procedure or scene using an intelligent vehicle



## Intelligent vehicle and network sensing platforms

Dynamic Sensing Platform

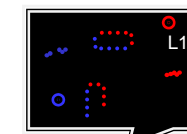


Robot-Car Platform

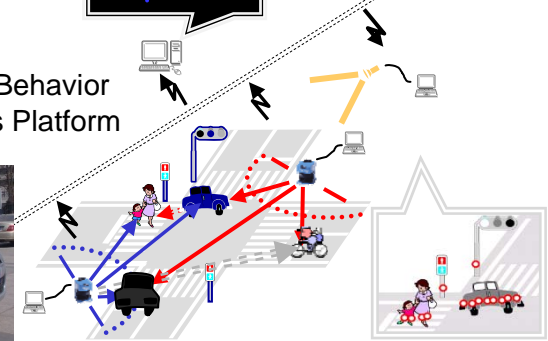
Autonomous Driving Platform



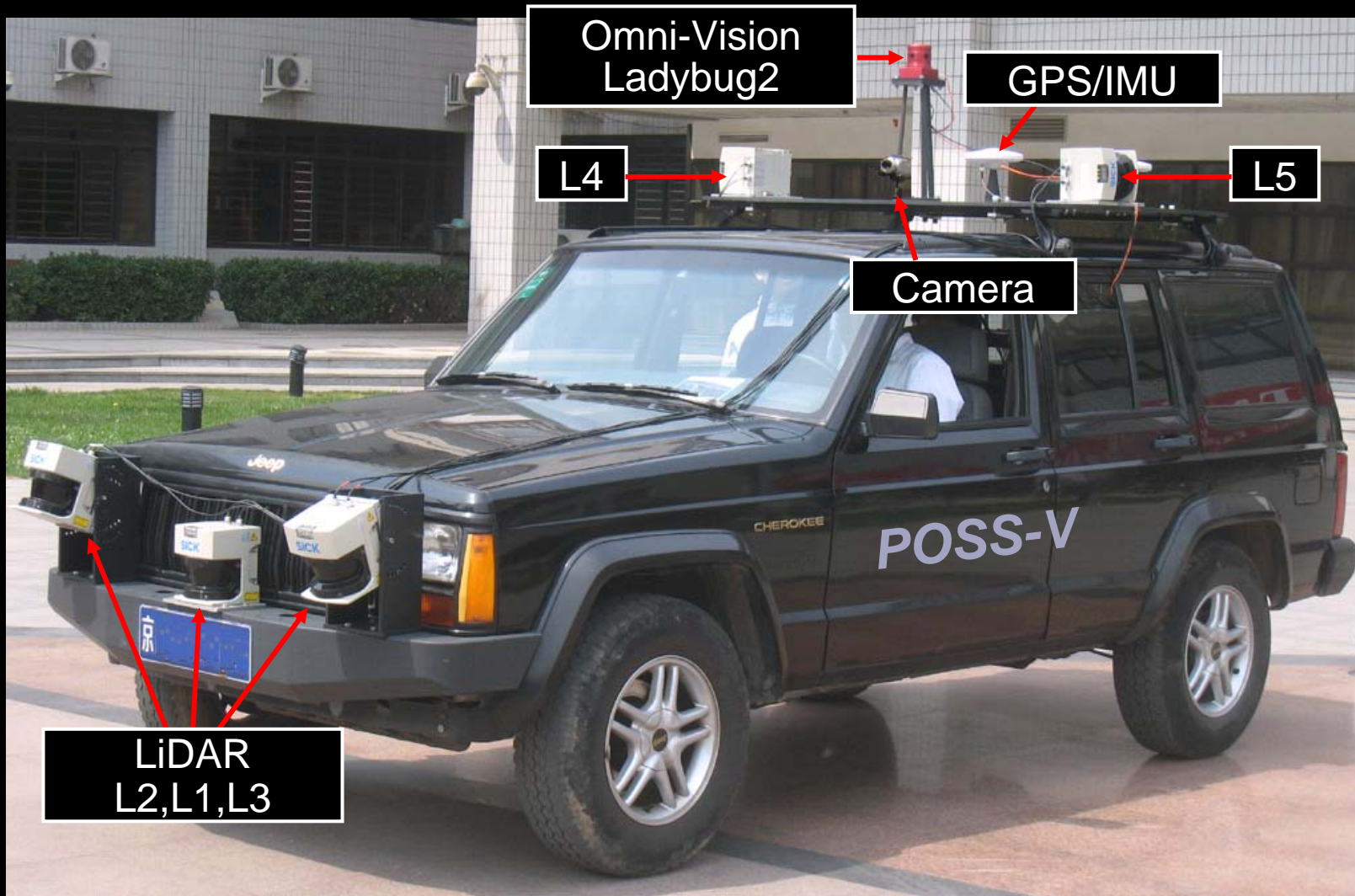
Driving Behavior Analysis Platform



Network Sensing Platform



# A Dynamic Sensing Platform



2008~2016



# An Autonomous Driving Platform



2010~2014

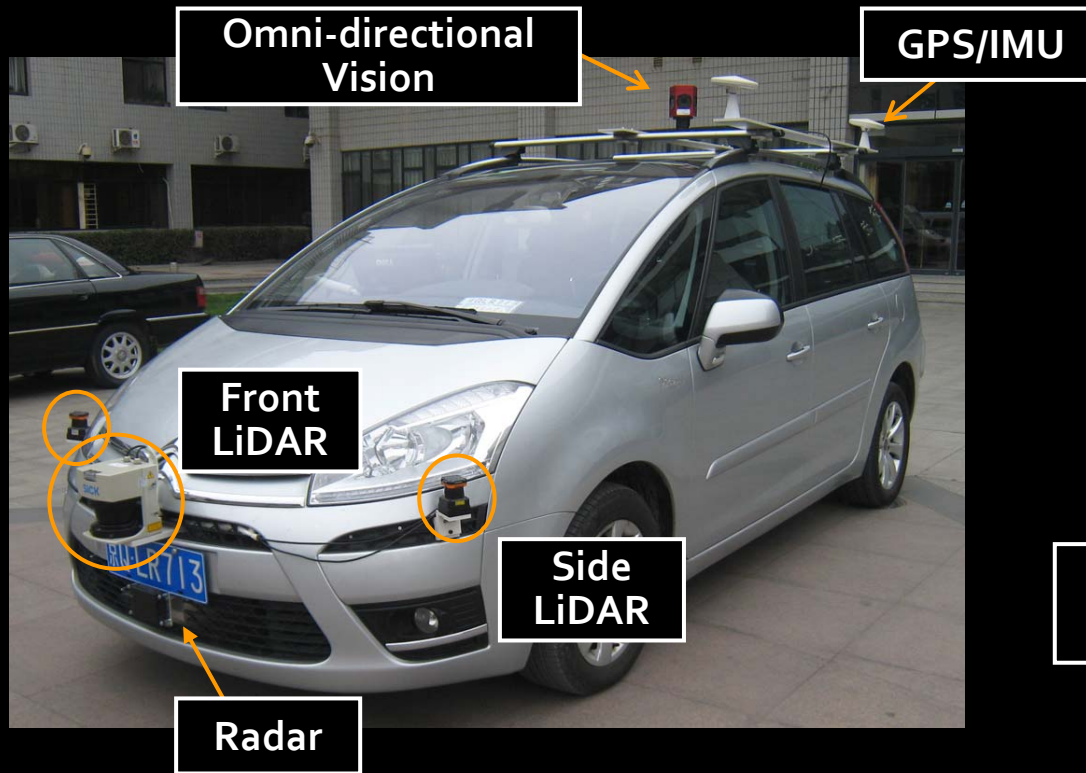


demo1

demo2

# A PSA Platform

*Sponsored by PSA*



On-road data collection for driving behavior learning and reasoning

TITS16-1  
accident

2013~



# An Off-Road Platform



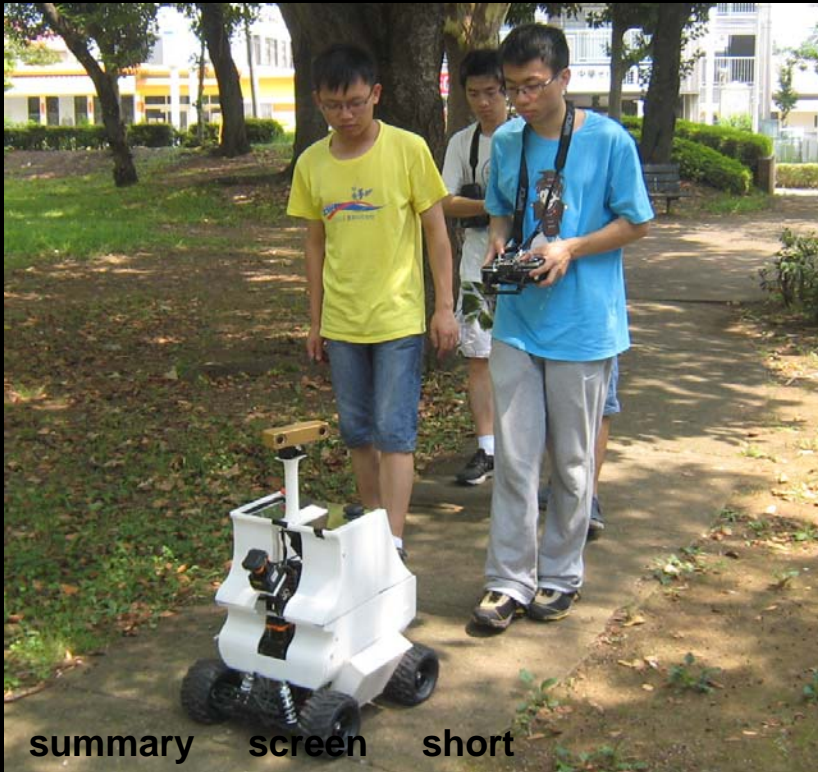
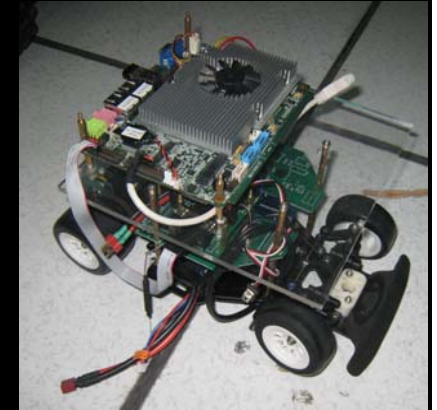
机所凸障碍  
塔河动规1  
坨里凹障碍  
路面检测

2016~



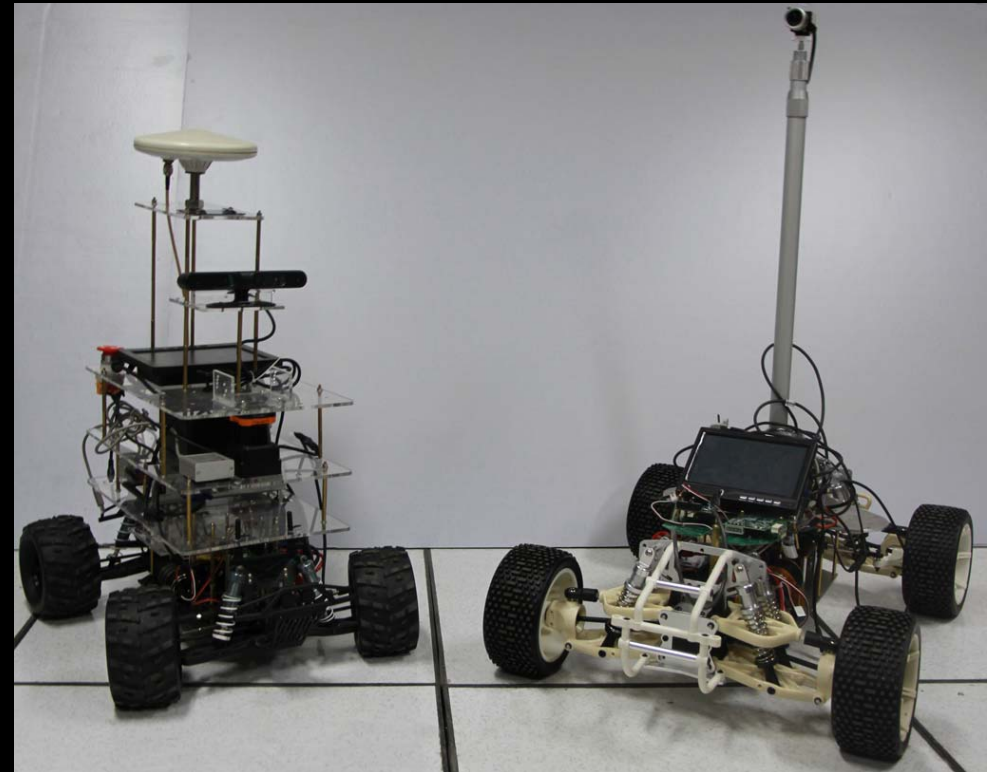
# Robotic Platforms

miny  
tiny  
goblin



summary screen short

Tsukuba Robotic Challenge 2013-14



POSS-MINYs 2013~

# Our New Platform



Autonomous Wheel Chair



Robot Car

2014~

Valeo Challenge 2015



# Wheeled + Tracked



Wheeled

Tracked



# Our Goal

We focus on **perception and reasoning techniques** of intelligent vehicle.

We want to develop an intelligent vehicle of **Omni-directional** eyes perceiving an environment of both static and dynamic objects.

We want to **reason based on real world sensing data**, so that to aware situations and predict potential risks.

We want to **map** dynamic environments, which contains 3D geometry, semantics and scene dynamics.

We want to **study potential applications** in car navigation, traffic simulation, surveillance, etc.

# Key Issues



- **Sensor Alignment** IROS13, ICRA14, ITSC14
- **Localization** IV14 ACTA16
- **3D Mapping** POI
- **Mobile Object Detection and Tracking** IV12 IROS12 IROS14 VC15  
Road Detection
- **Scene Understanding** FYK ICRA10
- **Behavior Analysis** IV12, IV13 DMARP
- ... ICRA11 TITS16-1 TITS16-2  
EgoCtr



Competitions and Open Experiments



Sensing at an Intersection

# Welcome To POSS !



Contact: 赵卉菁 / ZHAO Huijing, [zhaohj@cis.pku.edu.cn](mailto:zhaohj@cis.pku.edu.cn)

Tel: +86-1062757458

<http://www.poss.cis.pku.edu.cn/>